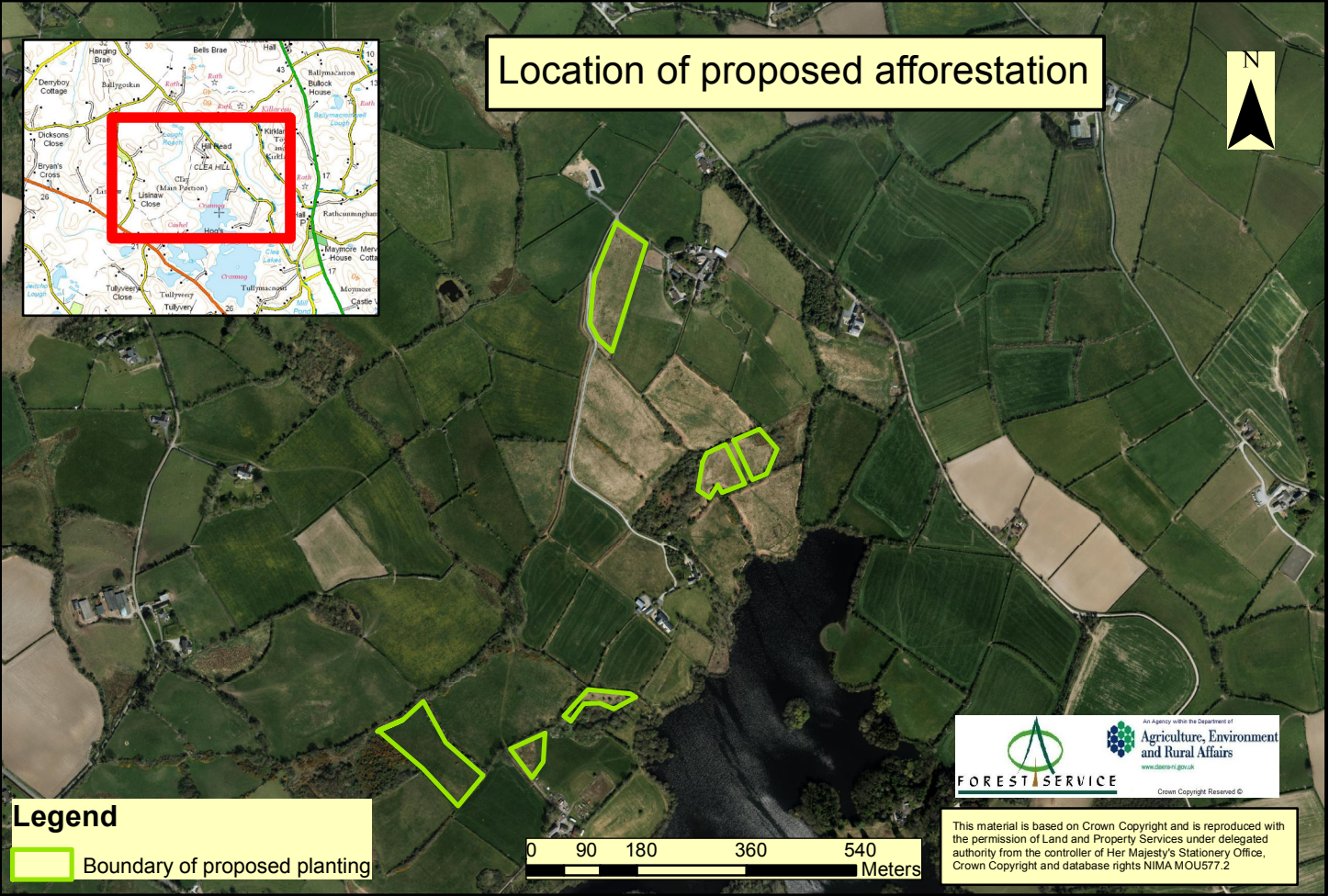
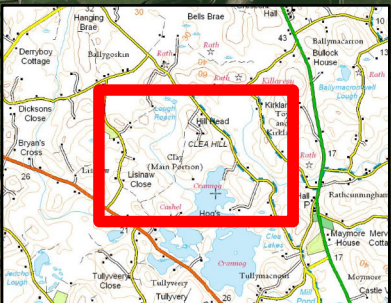
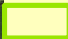
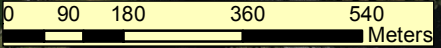


# Location of proposed afforestation



**Legend**

 Boundary of proposed planting



FOREST SERVICE

An Agency within the Department of  
**Agriculture, Environment  
and Rural Affairs**  
[www.dera.gov.uk](http://www.dera.gov.uk)  
Crown Copyright Reserved ©

This material is based on Crown Copyright and is reproduced with the permission of Land and Property Services under delegated authority from the controller of Her Majesty's Stationery Office, Crown Copyright and database rights NIMA MOU577.2