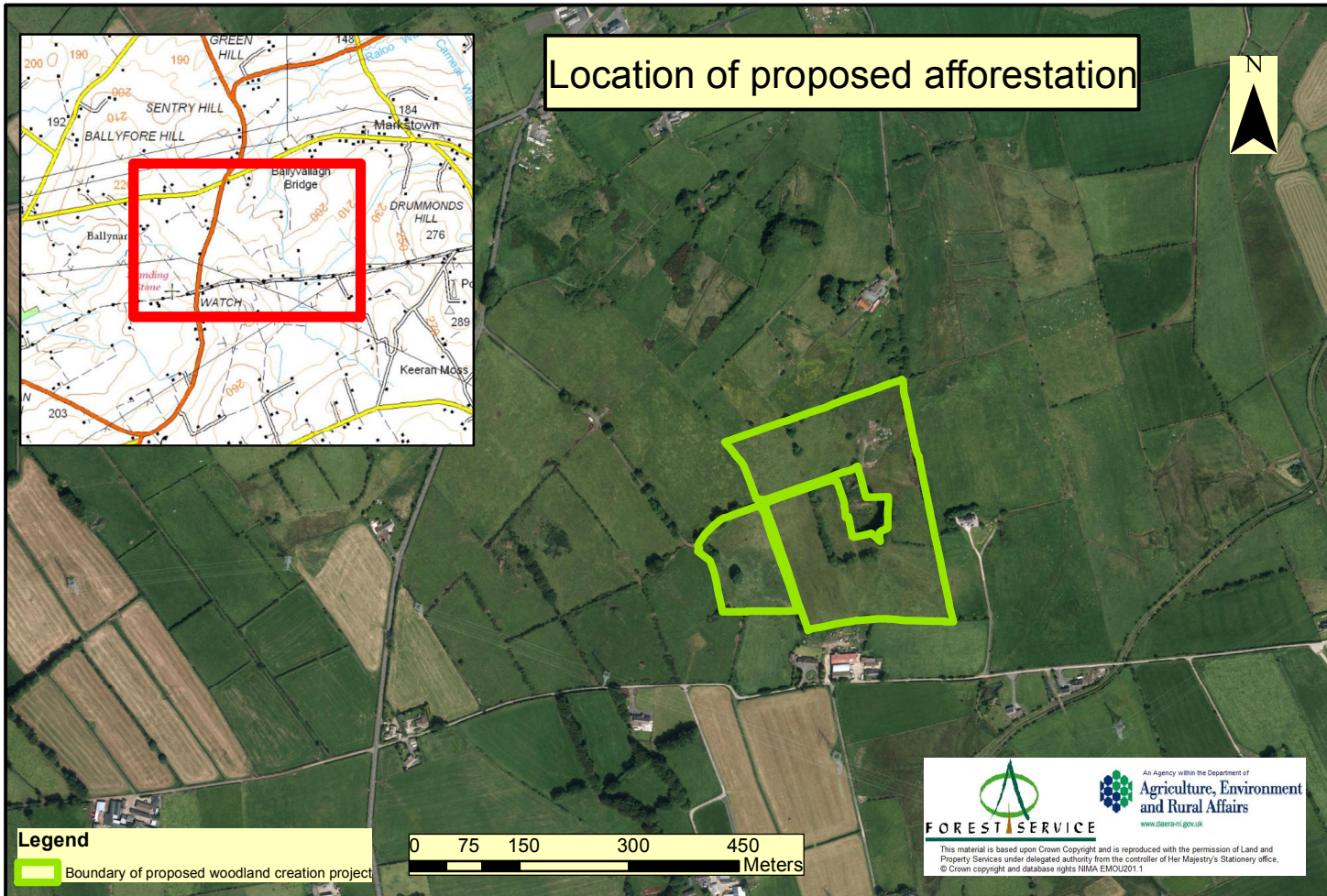
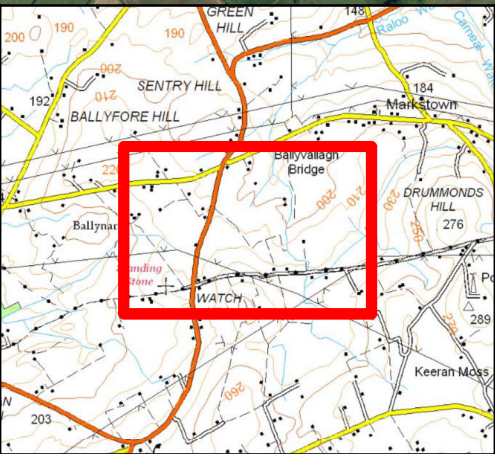
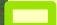
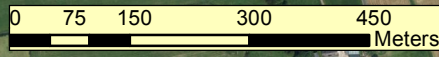



# Location of proposed afforestation



**Legend**  
 Boundary of proposed woodland creation project



 **FOREST SERVICE**  
An Agency within the Department of  
**Agriculture, Environment and Rural Affairs**  
[www.deara-ni.gov.uk](http://www.deara-ni.gov.uk)

This material is based upon Crown Copyright and is reproduced with the permission of Land and Property Services under delegated authority from the controller of Her Majesty's Stationery office, © Crown copyright and database rights NIWA EMOU2011